





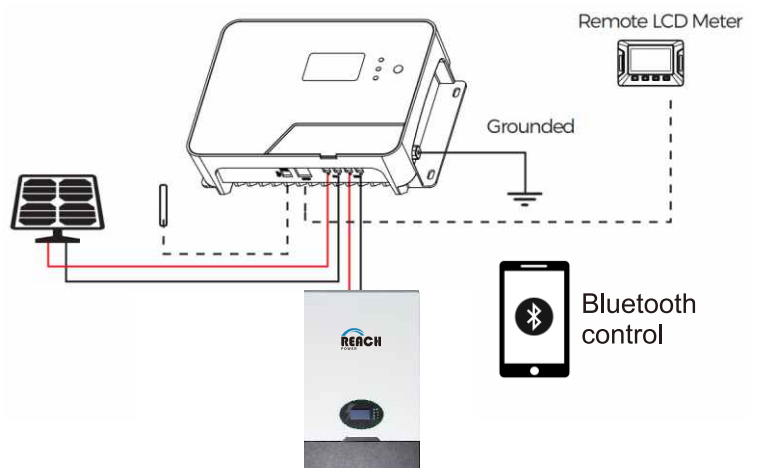




## RSCH-S 20A / 30A / 40A MPPT Solar Charge Controller

RoHS FCC CE

-  Supporting lithium battery activation
-  With built-in bluetooth communication module
-  Touch Screen operation and self cooling
-  Reverse polarity protection
-  Supporting RS485 communication with Modbus protocol (Rj12)
-  Built-in buffer, allows max 25% exceeding rated power input.



Model No.	RSCH-S 2420	RSCH-S 2430	RSCH-S 2440	RSCH-S 4820	RSCH-S 4830	RSCH-S 4840
System Wiring Grounded	Negative Grounded					
Battery System Voltage	12V/24V Auto (FLD/GEL/SLD/USE) Manual (Li/User)			12/24/36/48V Auto (FLD/GEL/SLD/USE) Manual (Li/User)		
No-load Loss	12mA/12V ; 10mA/24V			12mA/12V;10mA/24V;8mA/36V;6mA/48V		
Max Solar Input Voltage	<100Voc			<150Voc		
Rated Solar Charge Current	20A	30A	40A	20A	30A	40A
Max Solar Input Power	300W/12V 600W/24V	450W/12V 900W/24V	600W/12V 1200W/24V	300W/12V 600W/24V 900W/36V 1200W/48V	450W/12V 900W/24V 1350W/36V 1800W/48V	600W/12V 1200W/24V 1800W/36V 2400W/48V
Operating Temperature	-35°C ~ +45°C/-95°F ~ +113°F					
IP Protection	IP34					
Net Weight	1.222 kg	1.638 kg	1.886 kg	1.222 kg	1.638 kg	1.886 kg
Communication Port	RS485+Bluetooth(APP)					
Operating Altitude	≤ 3000 meters					
Controller Dimension	190*120*59mm	218*150*65mm		190*120*59mm	218*150*65mm	
<b>Battery Voltages</b>	<b>Battery Parameters</b>					
Battery Types	FLD	SEL	GEL (default)	USER (adjustable)	LI(adjustable)	
Equalize Charge Voltage	14.8V*n	14.6V*n	-	Default	-	
Boost Charge Voltage	14.6V*n	14.4V*n	14.2V*n	Default: GEL	Default: 14.2V*n	
Float Charge Voltage	13.8V*n			Default: GEL	-	
Boost Charge Recovery Voltage	13.2V*n			Default: GEL	-	
Over-discharge Recovery Voltage	-			-	-	
Over-discharge Voltage	-			-	-	
Auto Temperature Compensation	-3mV/2V/°C			Default: GEL	-	
<b>Accessory List</b>	<b>Package Status</b>					
External Temperature Sensor	Yes					
Remote LCD Meter	Optional					
Bluetooth Module	Yes/Built in					
Parallel Charge Use Cable	Optional					
User Manual	Yes					

Controller Specification, for example, the equalize charge voltage for a 12V FLD (Flooded) battery bank is 14.8V\*1=14.8V.

The equalizing charge voltage for a 24V FLD (Flooded) battery bank is 14.8V\*2=29.6V.

The variable "n" is adopted as a multiplying factor when calculating parameter voltages, the rule for "n" is listed as: if battery system voltage is 12V, n=1; 24V, n=2; 36V, n=3; 48V, n=4.